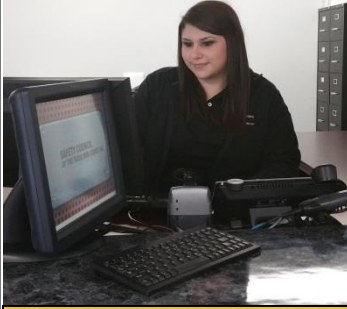


# HOW CAN WE HELP YOU?

At SCTMC, we value our customers through a commitment to quality safety training. Our commitment is illustrated by our clear communication, accurate record keeping, excellent customer service and corporate integrity.



## OUR SUBSCRIBER TIERS SAVE YOU MONEY!

**General Contractor or Business:** A contractor or business who engages in more than one discipline of work on a site. **\$250.00**

**Specialty Business:** Special trade contractor or business. May work as a sub for a General Contractor, performing only part of the work, primarily in one discipline, covered by the General Contract or they may work directly for the owner. **\$150.00**

**Vendor:** Any person, firm or corporation engaged in any work who furnishes material *but no labor* to a site. **\$50.00**

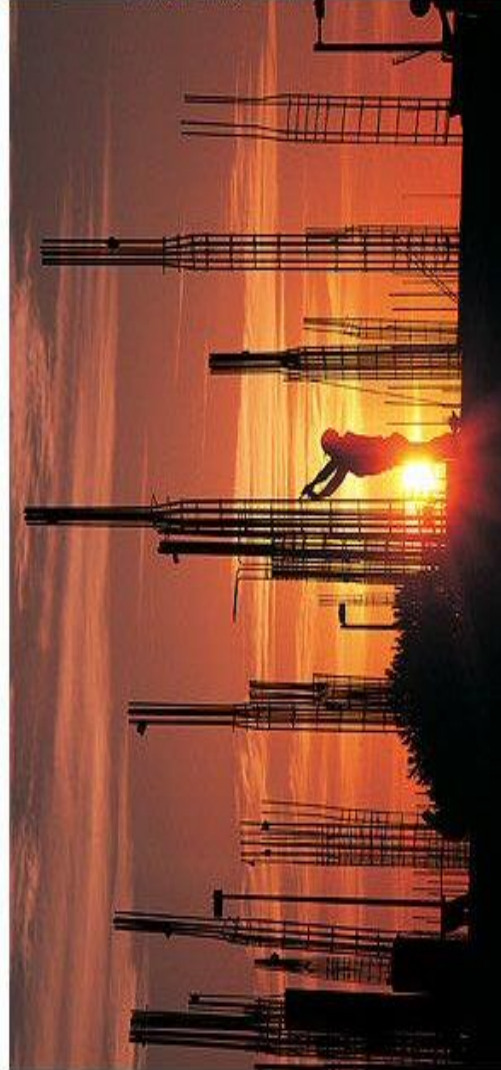
**Background Screen only clients:** Any company who wishes to process only background screens through SCTMC and not take advantage of the safety training discounts. **\$50.00**

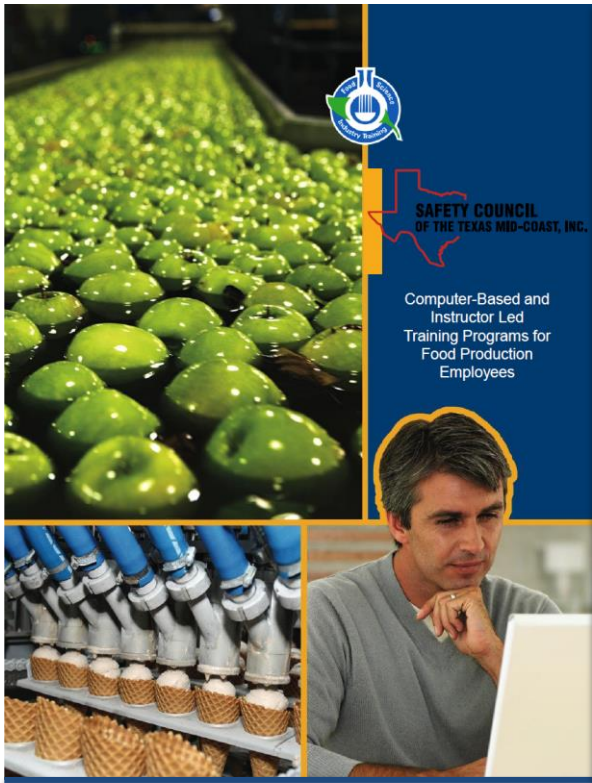
To become a subscriber visit: [www.cscportlavaca.org](http://www.cscportlavaca.org) or call 361-552-7823 extension 3.

SCTMC's computer based training cost is \$36/hour and we take care of the paperwork and recordkeeping! All classes at SCTMC are proctored or taught by qualified professionals.

**Our mission is to provide accredited workforce training, compliant with regulatory requirements, to promote a safe and healthy workplace.**

Providing the highest quality, lowest priced training possible





### Why should a corporation choose to train at the Safety Council?

- 3<sup>rd</sup> Party administered to provide legal/liability protection for site
- Consistent training reviewed by OSHA/MSHA professional working with site safety professionals
- Record keeping in case of audit (internal and external). Training records available online.
- Screening of trainees (background checks, social security & learning ability)
- All instructors are experienced professionals in the field
- Our nonprofit rates usually beat for profit training companies
- Trainees are ready to go when they get to the gate
- **SCTMC offers any training you need...we can create it, get it or find it worldwide!**

### FREQUENTLY REQUESTED TRAINING

## ARSC

ARSC BOP® is offered at 7:00 a.m. Tuesday – Thursday. (Available on Monday/Friday or after hours with 10 person minimum. Additional cost for weekend training.)

BASIC ORIENTATION PLUS®  
 BLOODBORNE PATHOGENS  
 BENZENE  
 GLOBALLY HARMONIZED SYSTEM  
 LINE OF FIRE

BASIC REFRESHER®  
 CONFINED SPACE  
 FIRE WATCH  
 HYDROGEN SULFIDE  
 ELEVATED WORK

## MSHA

SURFACE METAL/NON-METAL  
 8 HR. REFRESHER

24 HR. NEW MINER  
 8 HR. EXPERIENCED MINER

## Equipment training

FORKLIFT, ALL TERRAIN & WAREHOUSE  
 BACKHOE  
 MINI-EXCAVATOR

MANLIFT  
 SKID STEER  
 BULLDOZER

## Specialized training

RIGGER SIGNALPERSON  
 FIRST AID/CPR/AED  
 CRANE CERTIFICATION (CIC, NCCCO or NCCER)  
 EXCAVATION, TRENCHING & SHORING  
 HAZWOPER, 40 hour, 24 hour and 8 hour  
 COMPETENT PERSON CONFINED SPACE  
 COMPETENT PERSON, SCAFFOLD BUILDER, SCAFFOLD INSPECTION  
 LEADERSHIP FOR SUPERVISORS & MANAGERS

## OSHA TRAINING VIA



- General Industry Standards
- Trainer Course for General Industry Standards
- Permit Required Confined Space
- Fall Protection
- Electrical Standards
- Safety Standards for Scaffolding
- OSHA Standards for Construction
- Trainer Course for Construction Standards
- Machinery and Machine Guarding Standards
- Excavation, Trenching and Soil Mechanics

### Fire and Safety Training via UTA for emergency response and fire fighters:

- HAZWOPER General Site Worker 40 hr.
- Hazardous Materials Multi-Modal Transportation
- HAZWOPER First Responder Operations Level
- HAZWOPER Annual Refresher
- HAZWOPER First Responder Awareness Level
- Incident Command

**ISNetWorld Users: SCTMC can deliver ISNetWorld 3<sup>rd</sup> party training upon site/contractor request to ISNetWorld. Contractor will input data into ISNetWorld database and site can retrieve information.**

Site specific computer based training for local industry including Dow, DuPont, Formosa, Ineos, INVISTA, LyondellBasell and Seadrift Coke. Computer Based training available Monday through Friday 7:00 a.m. to 4:00 p.m. For more information on custom training for your company and Instructor led classes, please call 361.552.7823 x 1207\*